

PRODUCT DATA SHEET

Art. No. 63.022.0 - SIERRA NEVADA MID S3 WR CI HI HRO SRC



Protection: fiberglass cap and flexible FAP® midsole

Plus: CORDURA®

Upper: greased full leather

Lining: SYMPATEX®

Footbed: evercushion® BA+

Sole: PU/rubber sole SCUFF CAPS EVO - 300°C heat resistant, slip-resistant on unsurfaced grounds, mud-releasing

Sizes / Width: 39 - 48 / 11



CORDURA®



SLIP RESISTANT



HRO SOLE



HEAT INSULATED



COLD INSULATED



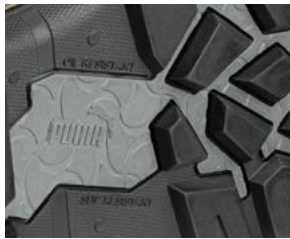
WATERPROOF



BIG SIZES



COMFORTABLE FIT



Rubber outsole SCUFF CAPS EVO

It is obvious that the heavy duty pattern of this hard-wearing, up to 300°C heat resistant HRO rubber outsole has been designed for optimum safety and performance, especially on unsecured grounds.



Fiberglass toe cap

The fiberglass reinforced composite toe cap offers more space for the toes, is lighter than a common steel cap, antimagnetic and thermally insulating.



VOLUME PLUS⁴⁸

The special shape of the last provides more space to the small toes and the ball of the foot. This extra comfort is available up to size 48.



Scuff Cap

Extra high scuff cap for wearers who kneel a lot during their work.



evercushion® BA+

This anatomically shaped, moisture regulating footbed has a non-slippery surface. Two layers of foamed polyurethane in different densities guarantee an active cushioning. The heel and ball elevations as well as the support of the longitudinal arch improve the foot's hold. Furthermore they ensure a natural position of the foot, a relief of pressure and muscle stimulation while walking.



Upper

The upper made of robust full leather which is resistant to abrasion. The smooth and soft material offers more protection from penetrating moisture and is easy to clean.

The SYMPATEX® membrane lining is wind- and waterproof and ensures an excellent moisture management.

