



- Protection:** fiberglass toe cap and flexible FAP® midsole
- Upper:** durable microfibre
- Plus:** Heel & Arch Support, two-width system, extremely lightweight
- Lining:** BreathActive functional lining
- Footbed:** evercushion® RELIEF^T
- Sole:** FLEXLITE - slip resistant DUO-PU and TPU outsole with midsole of continuously high performance EFFECT.FOAM® for excellent cushioning and energy return
- Sizes:** 36 - 50



FLEXLITE OUTSOLE

The noticeably light and ergonomic sole architecture with differently sized lugs and curved grooves ensures optimum liquid displacement and supports a natural rolling movement. Wear-resistant TPU inserts in the areas subject to the greatest strain and reinforced arch support ensure a secure grip, especially on industrial floors. The distinctive heel enables outstanding grip on ladders.



EFFECT.FOAM®

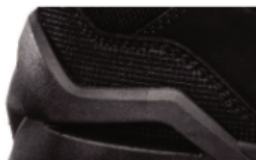
- Tireless comfortable!
- 60% energy return
 - 47% less impact on bones and joints*
 - extremely powerful and light
 - permanently high level of comfort for fatigue-free work

* Dynamic energy absorption reduces the impacts to 1.6kN, the average for safety shoes is 3.0kN.



HEEL & ARCH SUPPORT

The three-dimensional element formed directly from the EFFECT.FOAM midsole surrounds the heel and supports the midfoot. This ensures maximum hold, protects against ankle twists while



EVERCUSHION® RELIEF^T

This ergonomically shaped, high-performance footbed is a combination of different soft polyurethane layers. It reliably protects the heel from shock,

